

G1092 Gear for Sports® Big Cotton Crew

Screen Print

FC3 Full Chest(Standard): 14"w x 13"h / 12"w x 12"h(recommended), (max. 3 colors)

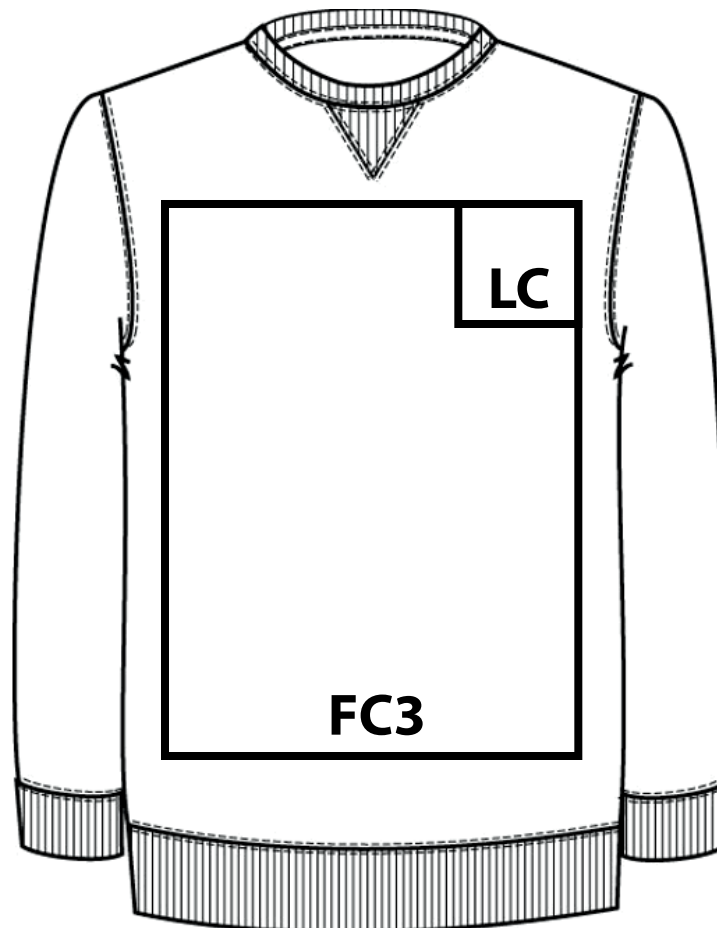
LC Left Chest(Optional): 4"w x 4"h / 3"w x 3"h(recommended), (max. 3 colors)

Minimum Font Size: 16 pt.

Minimum Line Weight: 1 pos / 2 neg

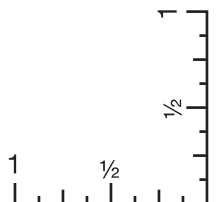
Halftones Not Available

Fabric Content: 80% Cotton/ 20% Polyester



FC3 "Full Chest"- Top of art starts 3" down from center neck seam, art will fall approximately 0.75" from "V" notch.

LC "Left Chest"- Top of graphic will be placed 7.0" down from high point shoulder, visually centered in left half of garment.



G1092 Gear for Sports® Big Cotton Crew

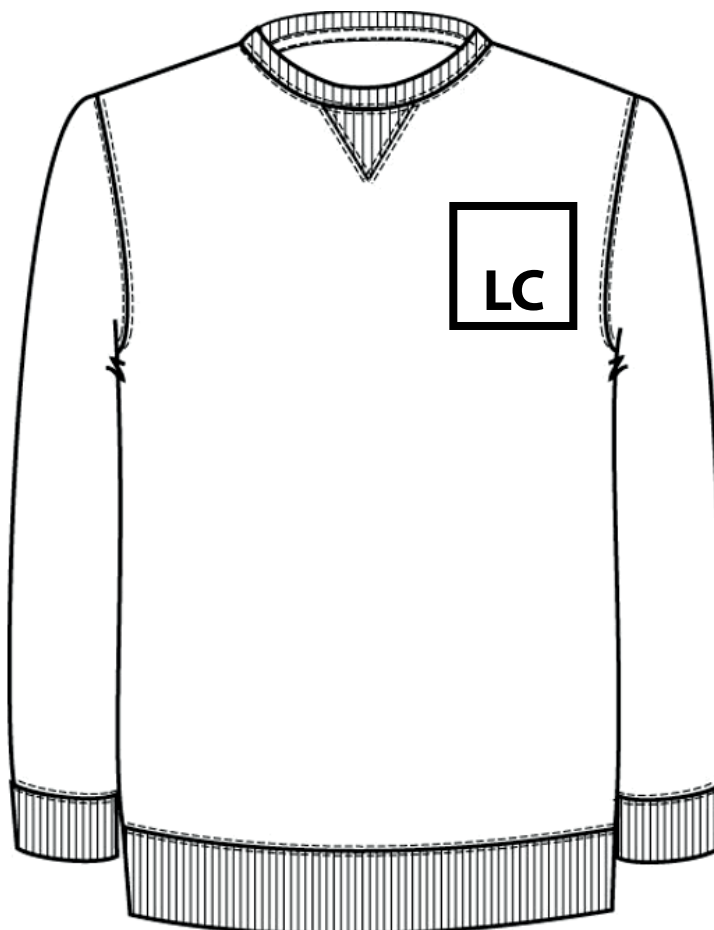
Embroidery

LC Left Chest(Optl, add'l charge): 4"w x 4"h / 3"w x 3"h(recommended), (max. 9 colors)

Minimum Font Size: 5 mm tall, (lower case)

Minimum Line Weight: 1 mm / 2.8 pt

Fabric Content: 80% Cotton/ 20% Polyester



LC "Left Chest"- Center of graphic will be placed 8.0" down from high point shoulder. The graphic will be visually centered in the left half of the garment.

